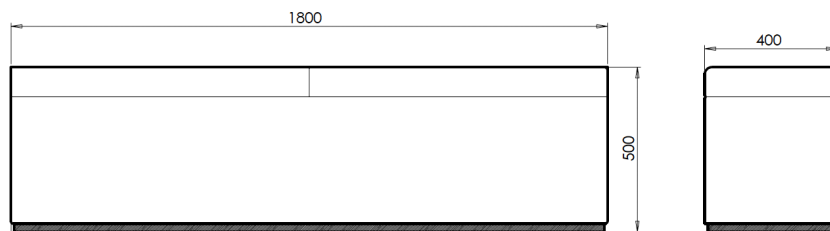
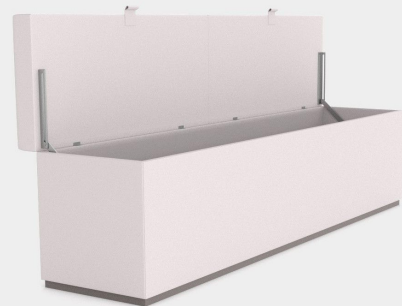
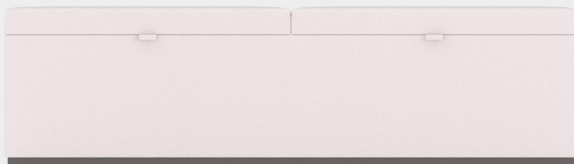




## AZUR COLLECTION - MARLON OTTOMAN DUO - WITH STORAGE



**INTERNAL CONSTRUCTION:** WBP mortice and tenon joined hard wood frame. Integrated drain and marine grade webbing.

**STORAGE:** 2 lid storage

**FRAME:** Solid kiln dried Iroko with rubber base

**LID STAY:** Stainless steel

**FABRICS:** COM (Customer Own Material) on manufacturers approval

**FABRIC METERS:** 4 metres

**ACCESSORIES:** All Weather Cover

**MADE TO MEASURE:** Custom finishes and sizes available on request

*\* All sizes are approximate*

